



# Presenting ESUPS and STOCKHOLM

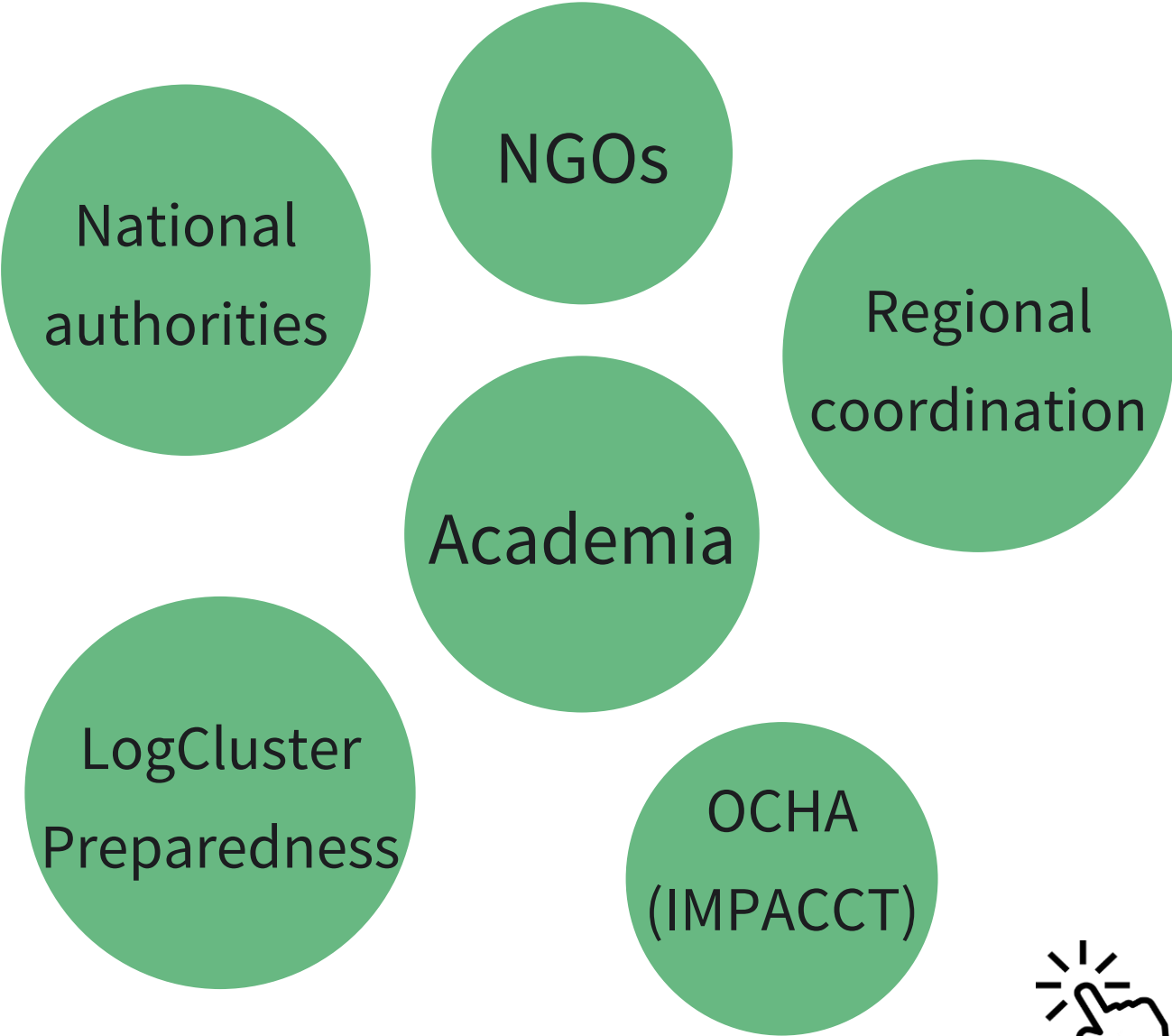
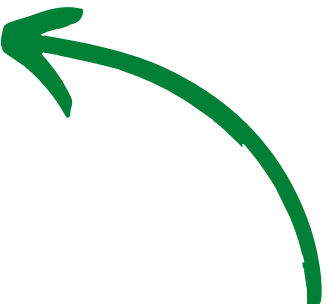
What is ESUPS project and a brief  
introduction to STOCKHOLM platform

# **1** **Background:** **ESUPS & STOCKHOLM**

What is ESUPS project and how is STOCKHOLM central to it

# ESUPS Team, Steering Group, Network

 hosts [ESUPS Team](#) (3 staff)



**ESUPS Steering Group** members  
(click for more info)

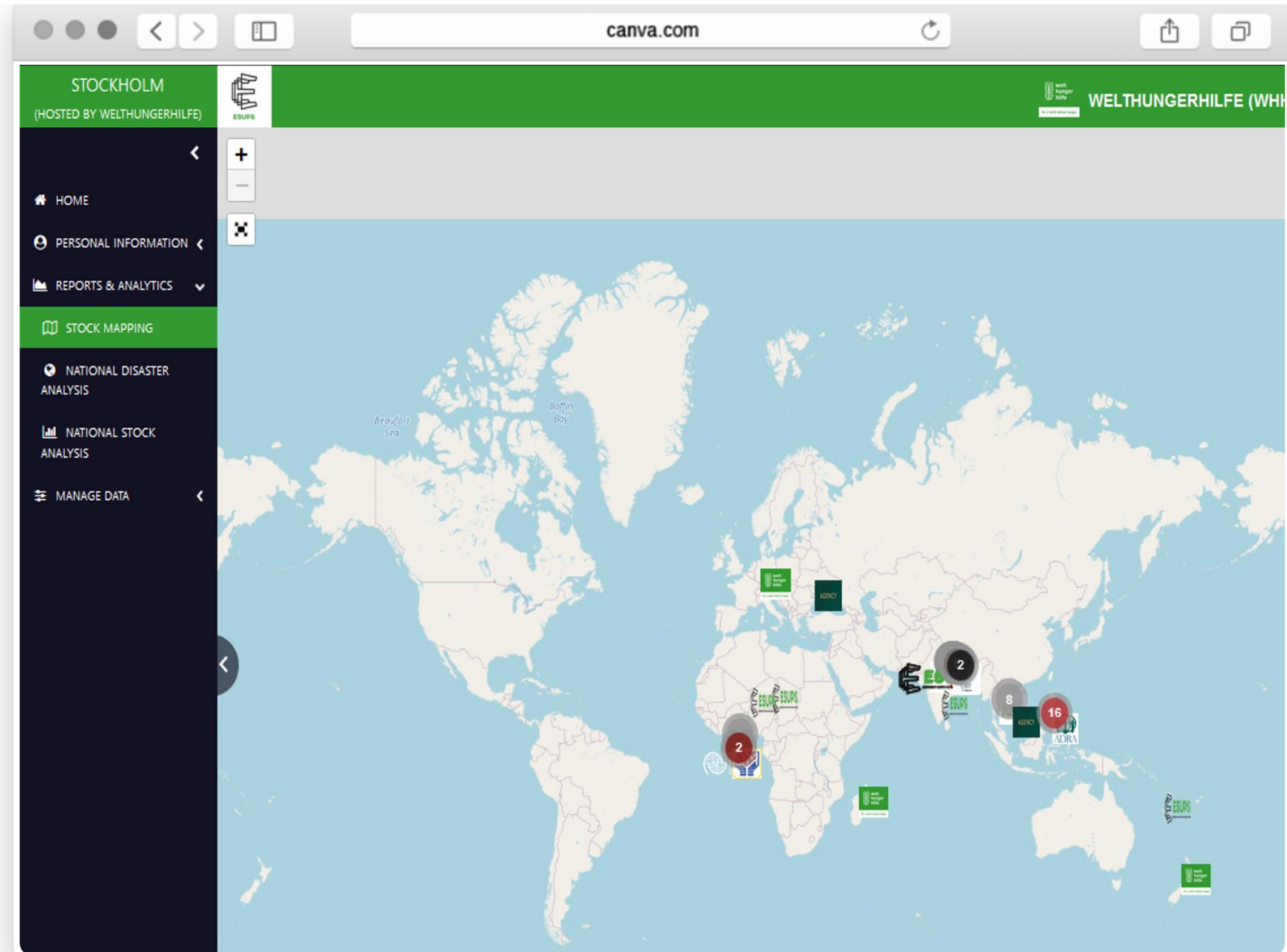


**ESUPS network** of partners and supporters  
(click for more info)



# From coordination to collaboration

**ESUPS**



# 2 STOCKHOLM: what and why

What is STOCKHOLM and why it can be helpful



[Access here](#)

# STOCKHOLM

STOCK of Humanitarian Organisations  
Logistics Mapping

# What is STOCKHOLM

## Visual overview of stock

Displays information on pre-positioned stock quantities across countries, regions or other geographical areas.

## Stock analysis

Provides **collective** recommendations on pre-positioned stock items, quantities and locations to achieve time and costs savings.

## Owned by users

Supports ownership of stock level management. Users update their data according to their own choices and preferences.

## Connected to other platforms

Designed to communicate with other datasets and analytic tools used in the sector.

**STOCKHOLM is not a...**

...Warehouse management system

...Tool to track distributions

...Platform with other information than stock



# COLLECTIVE PREPAREDNESS

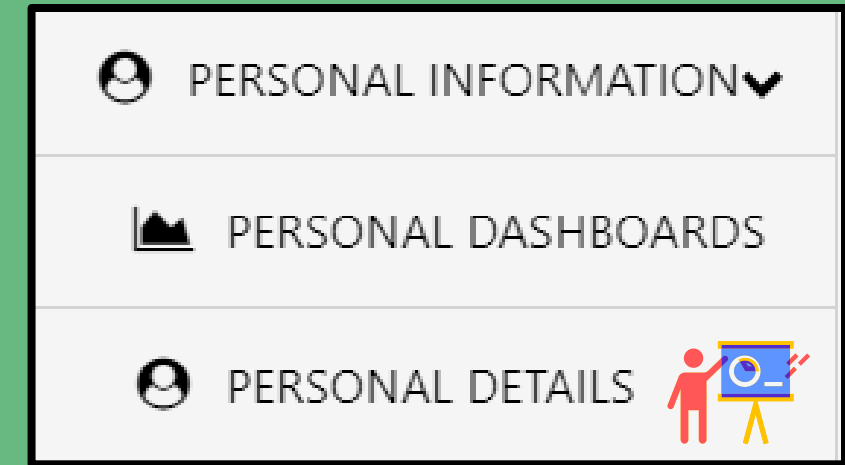
ITEM GROUP	QUANTITY	UNIT
MOSQUITO NET	41221	PIECE
OTHER KITCHEN ITEMS	26668	EACH
OTHER LAMP / LANTERNS	272	EACH
OTHER MEDICAL HARDWARE	35389	EACH
OTHER PROTECTION MATERIALS	7849	EACH
OTHER TOOLS AND HARDWARE	102350	EACH
PERSONAL PROTECTION KITS	515722	EACH

SELECT FROM THE FOLLOWING TO ADD COLUMNS

INCLUDE COLUMNS  |

[DOWNLOAD DATA](#)





# 3 STOCKHOLM: personal dashboards

Part of the "Personal information" section

 to be explored during  
STOCKHOLM training

# Personal dashboards

Here you can

- see pending registration requests
- see user details

The screenshot displays a personal dashboard for 'STOCKHOLM (HOSTED BY WELTHUNGERHILFE)'. The user is identified as 'SOFIA MINETTO'. The dashboard is divided into several sections:

- USER DETAILS:** Shows 'ACTION AID' with 1 pending registration and 'WELTHUNGERHILFE' with 1 pending registration. A 'SEE DETAILS' button is available for each.
- PENDING REGISTRATIONS:** A bar chart showing 1 pending registration for 'ACTION AID' and 1 for 'WELTHUNGERHILFE'. A 'SEE DETAILS' button is present.
- USER NUMBERS:** A line chart showing user numbers from Sep 2021 to May 2022. The numbers start at 0, rise to 5 in Nov 2021, dip slightly in Jan 2022, and then rise to 15 in May 2022. A 'SEE DETAILS' button is present.
- USER ACCOUNT ACTIVITY:** A bar chart showing activity by duration: 1 for 31-90 DAYS (green bar), 1 for 90+ DAYS (red bar), and 3 for 0-30 DAYS (yellow bar). A 'SEE DETAILS' button is present.
- USER ACTIVITY BY COUNTRY:** A section labeled '[WORK IN PROGRESS]' with a loading spinner. A 'SEE DETAILS' button is present.

The dashboard also features a sidebar with navigation options: HOME, PERSONAL INFORMATION, PERSONAL DASHBOARDS (highlighted), PERSONAL DETAILS, REPORTS & ANALYTICS, and MANAGE DATA. The USAID logo is visible at the bottom left. A bottom navigation bar shows 'USER DETAILS' (highlighted) and 'STOCK DETAILS'.

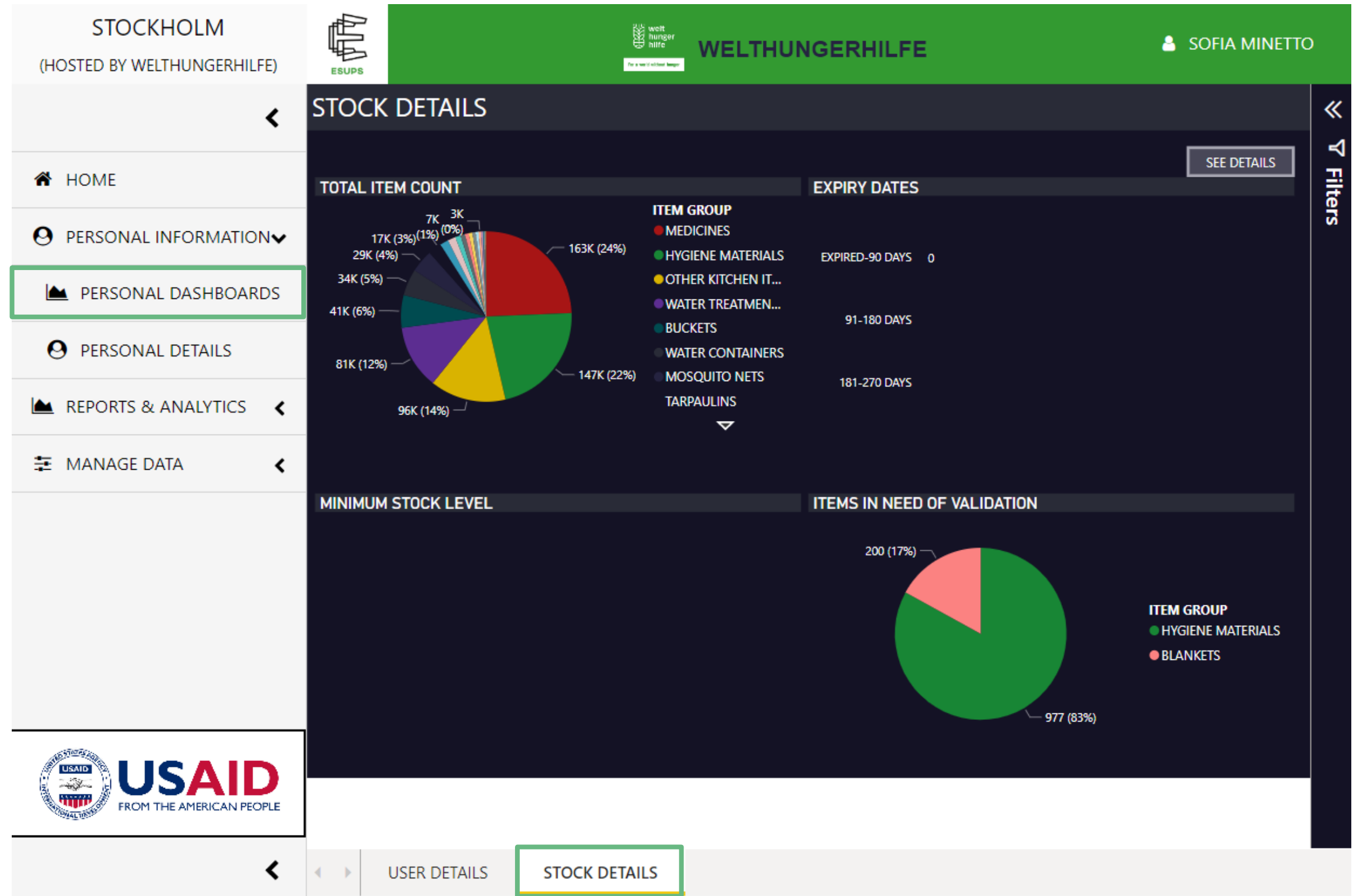


info displayed varies based on role

# Personal dashboards

Here you can

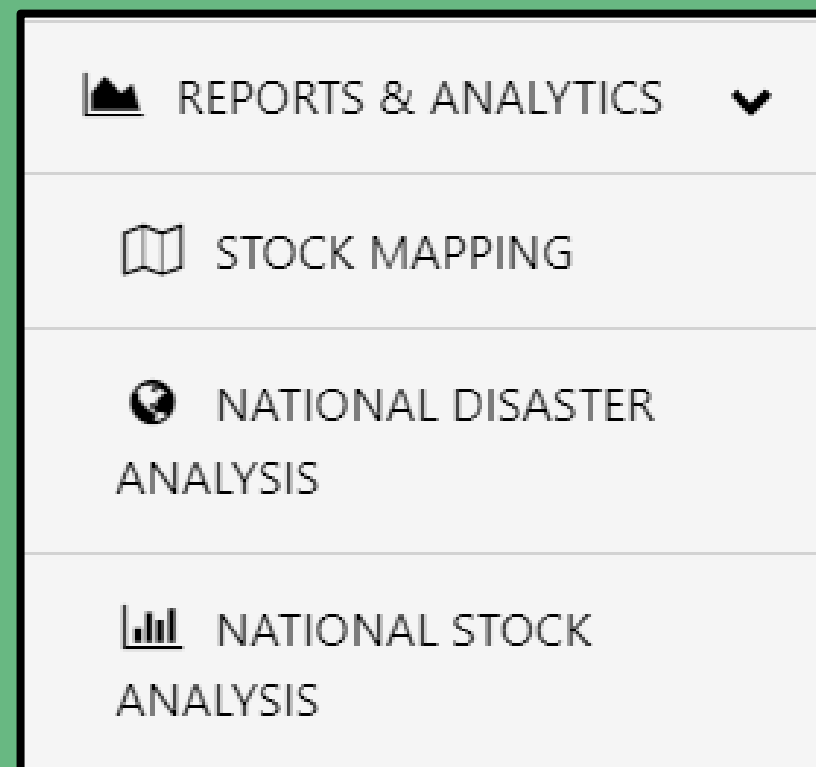
- see pending registration requests
- see user details
- see stock details



info displayed varies based on role

# 4 STOCKHOLM: reports and analytics

Stock mapping, National disaster analysis, National stock analysis

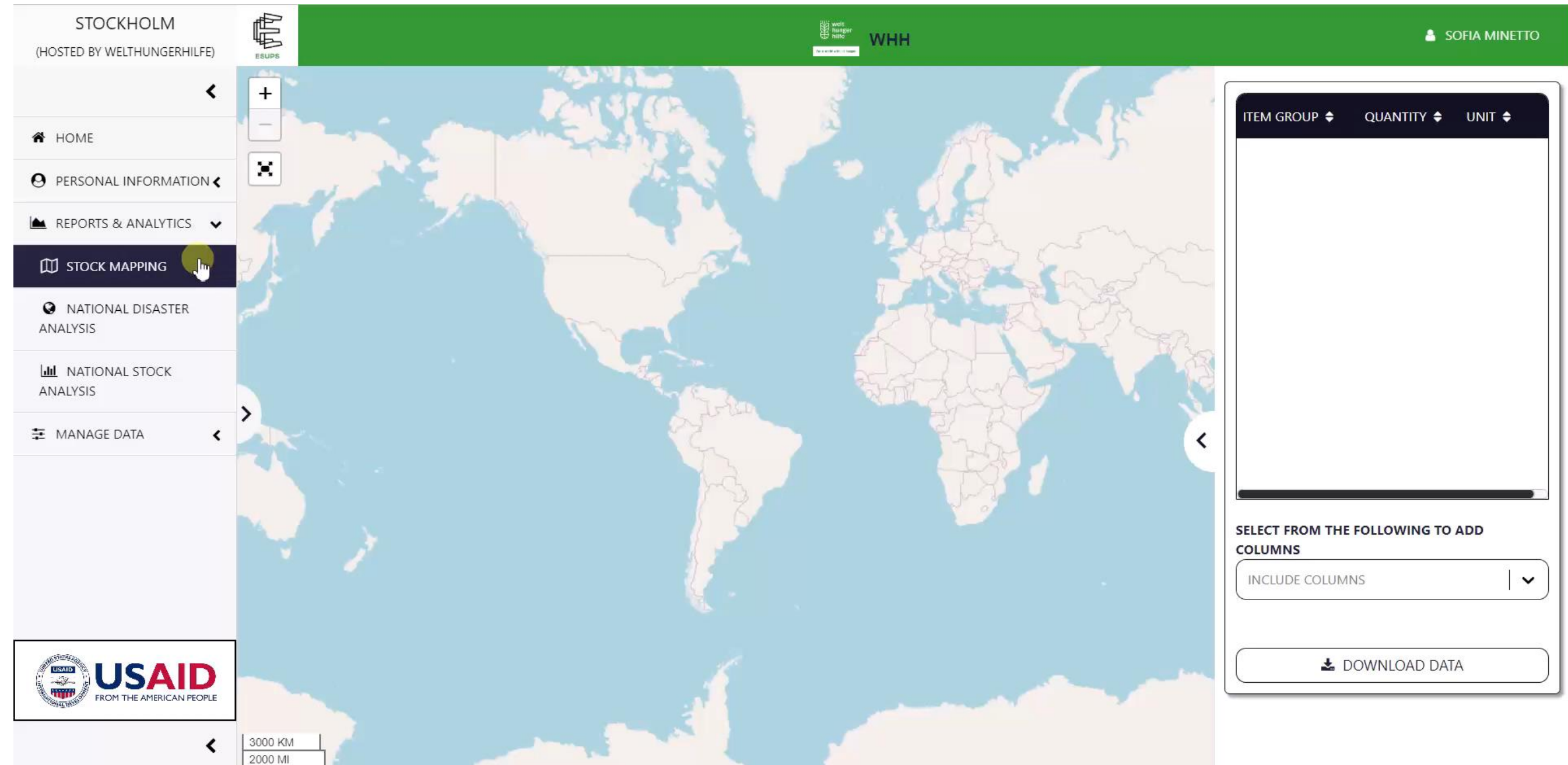


# Stock report mapping

 accessible to all registered users

## Here you can

- select countries (one or more)
- select additional filters
- visualise stock on map
- consult stock report generated on the right-hand side



STOCKHOLM  
(HOSTED BY WELTHUNGERHILFE)

ESUPS

WORLD HUNGER MAPS WHH

SOFIA MINETTO

HOME

PERSONAL INFORMATION

REPORTS & ANALYTICS

STOCK MAPPING

NATIONAL DISASTER ANALYSIS

NATIONAL STOCK ANALYSIS

MANAGE DATA

USAID  
FROM THE AMERICAN PEOPLE

3000 KM  
2000 MI

ITEM GROUP

QUANTITY

UNIT

SELECT FROM THE FOLLOWING TO ADD COLUMNS

INCLUDE COLUMNS

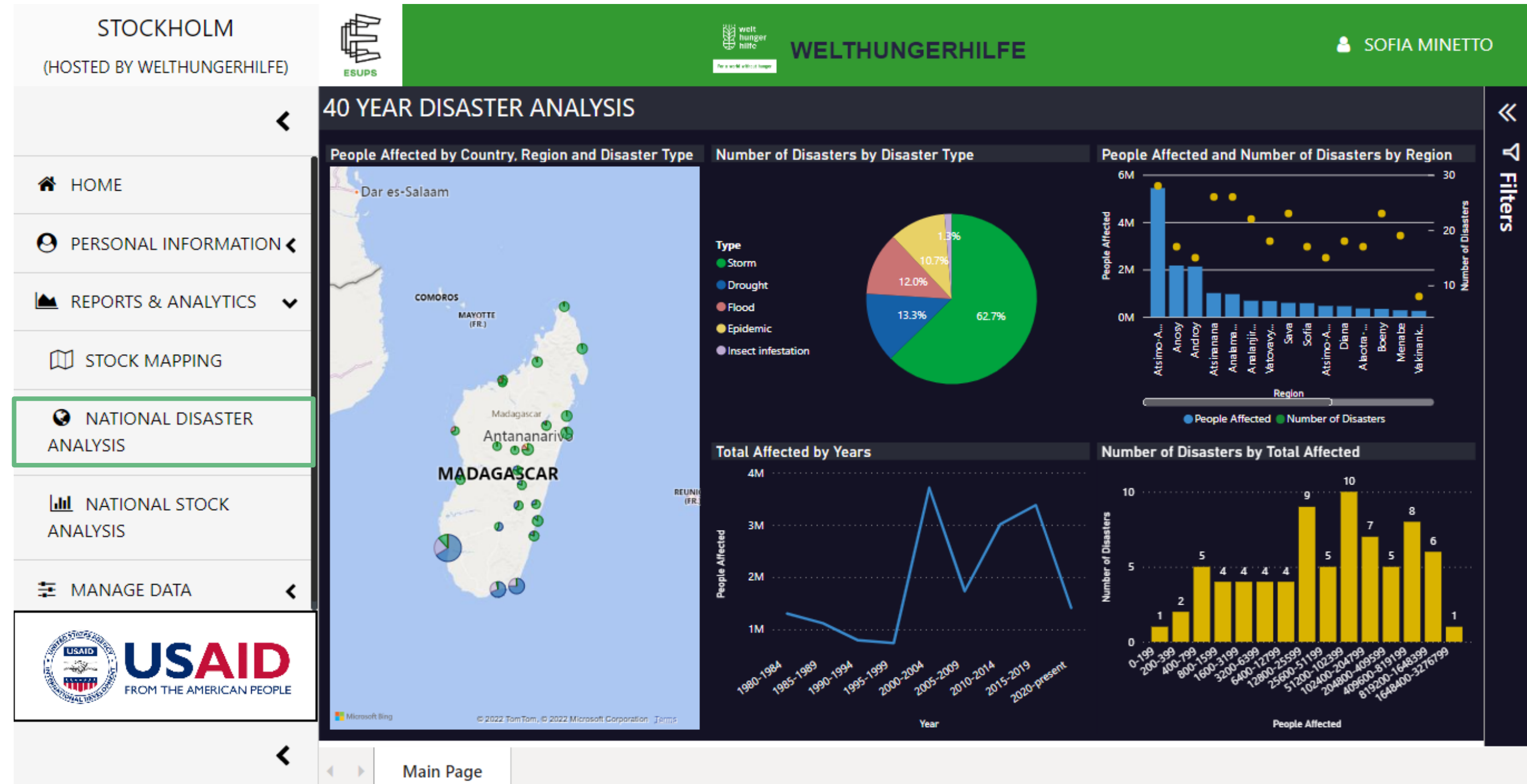
DOWNLOAD DATA

# National disasters analysis

 accessible to all registered users

Here you can

- get insights from the analysis of the last 40 years of disasters

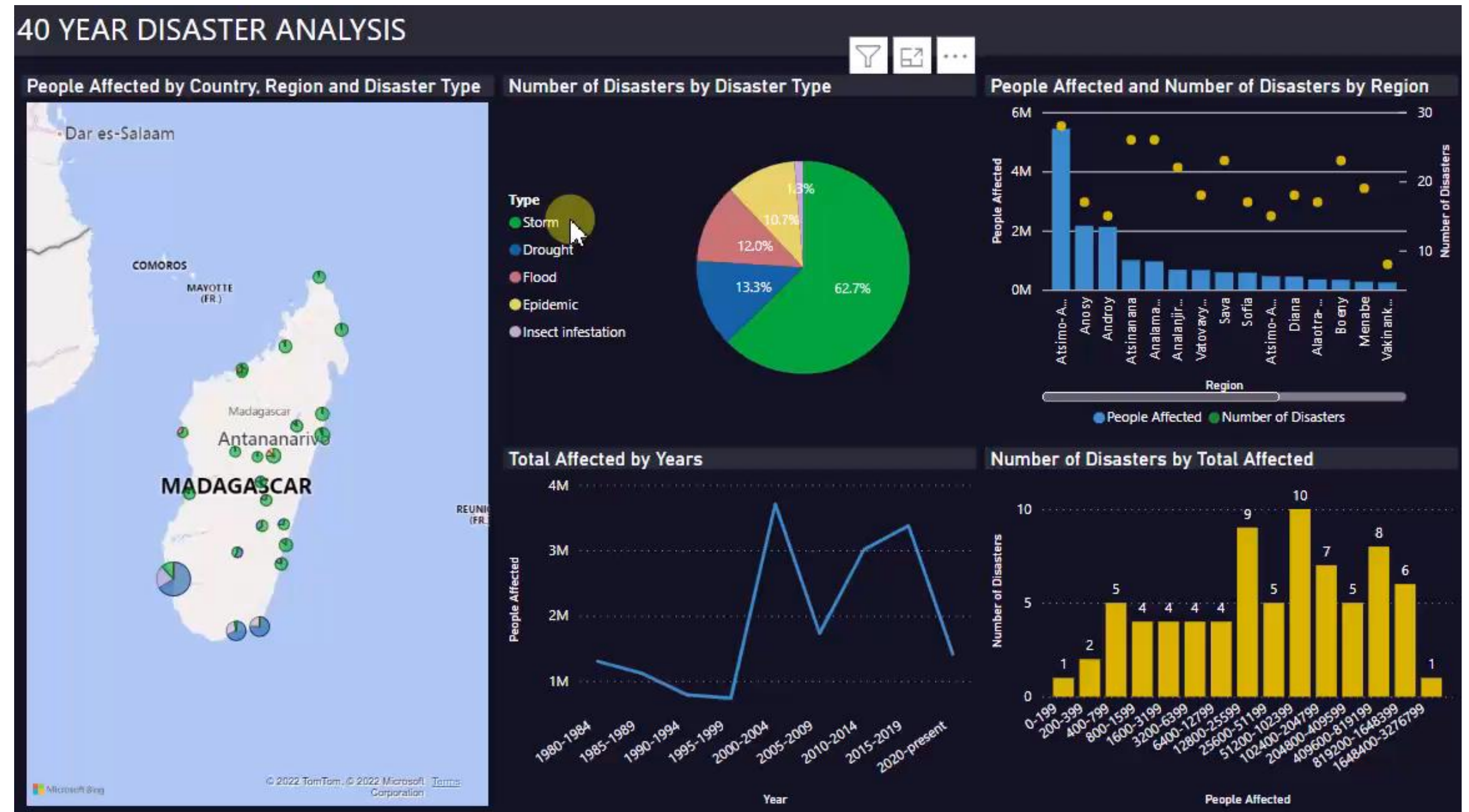


# National disasters analysis

 accessible to all registered users

Here you can

- get insights from the analysis of disaster data since 1980
- interact with dashboards
- export data



# National stock analysis

Here you can

 accessible to all registered users

 collective analysis

- visualise current national capacity to support disasters
- get assessment on quantities and locations per item

